



Total Representation  
of the incidence level

# Incidence of Lyme Disease in the United States

by MedFriendly.com

## Incidence

The number of  
new confirmed  
cases per 100,000  
people.



1. Lyme disease is a tick-borne disease.
2. Ixodes scapularis (left) is the tick that most commonly carries Lyme disease.

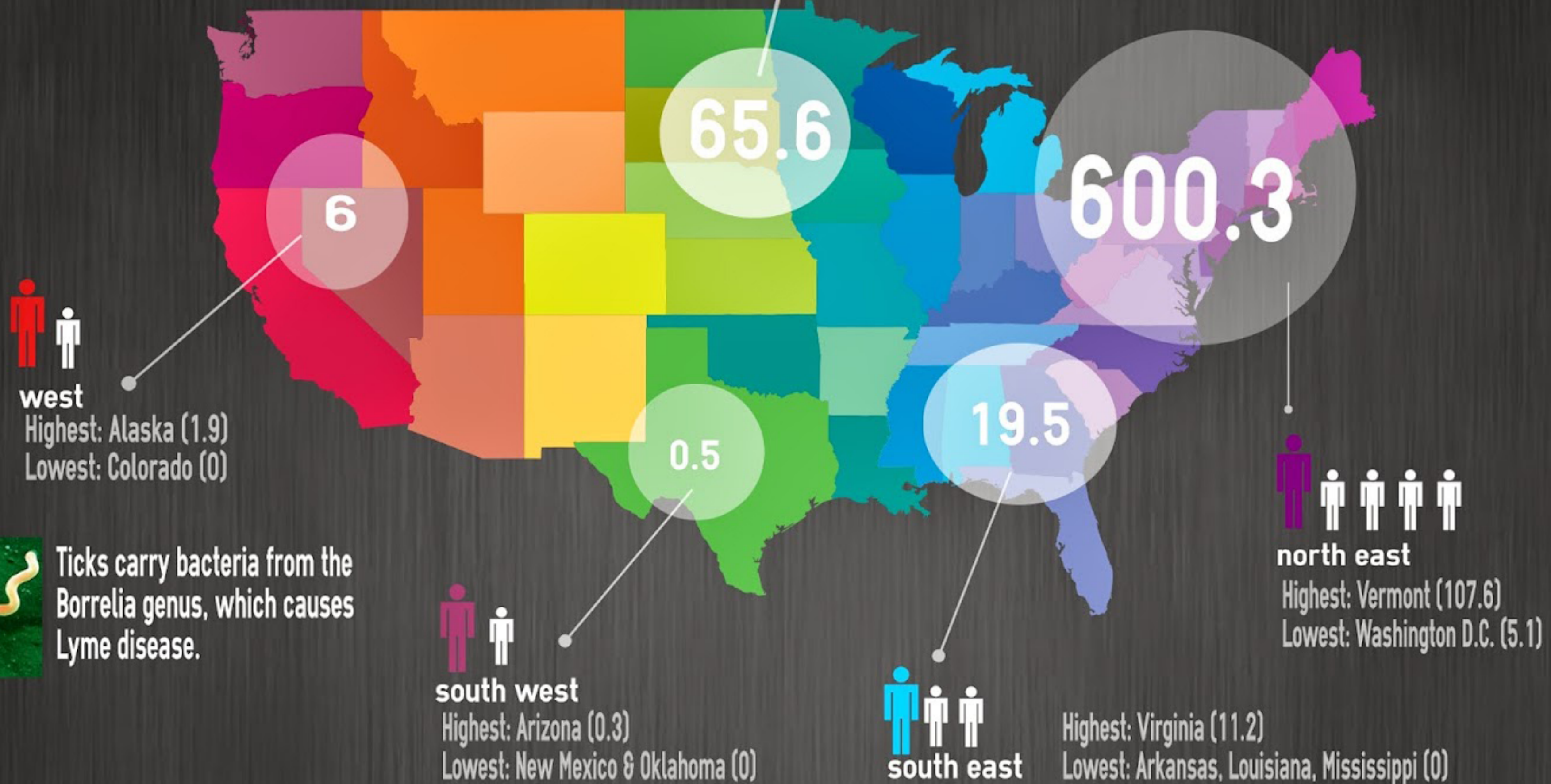


mid west

Highest: Minnesota (26.4)  
Lowest: Missouri (0)



70-80-% of patients develop  
a rash that may or may not  
look like a bull's-eye.



Ticks carry bacteria from the  
Borrelia genus, which causes  
Lyme disease.